



Zentrum für Verwaltungsforschung
Managementberatungs- und
WeiterbildungsGmbH

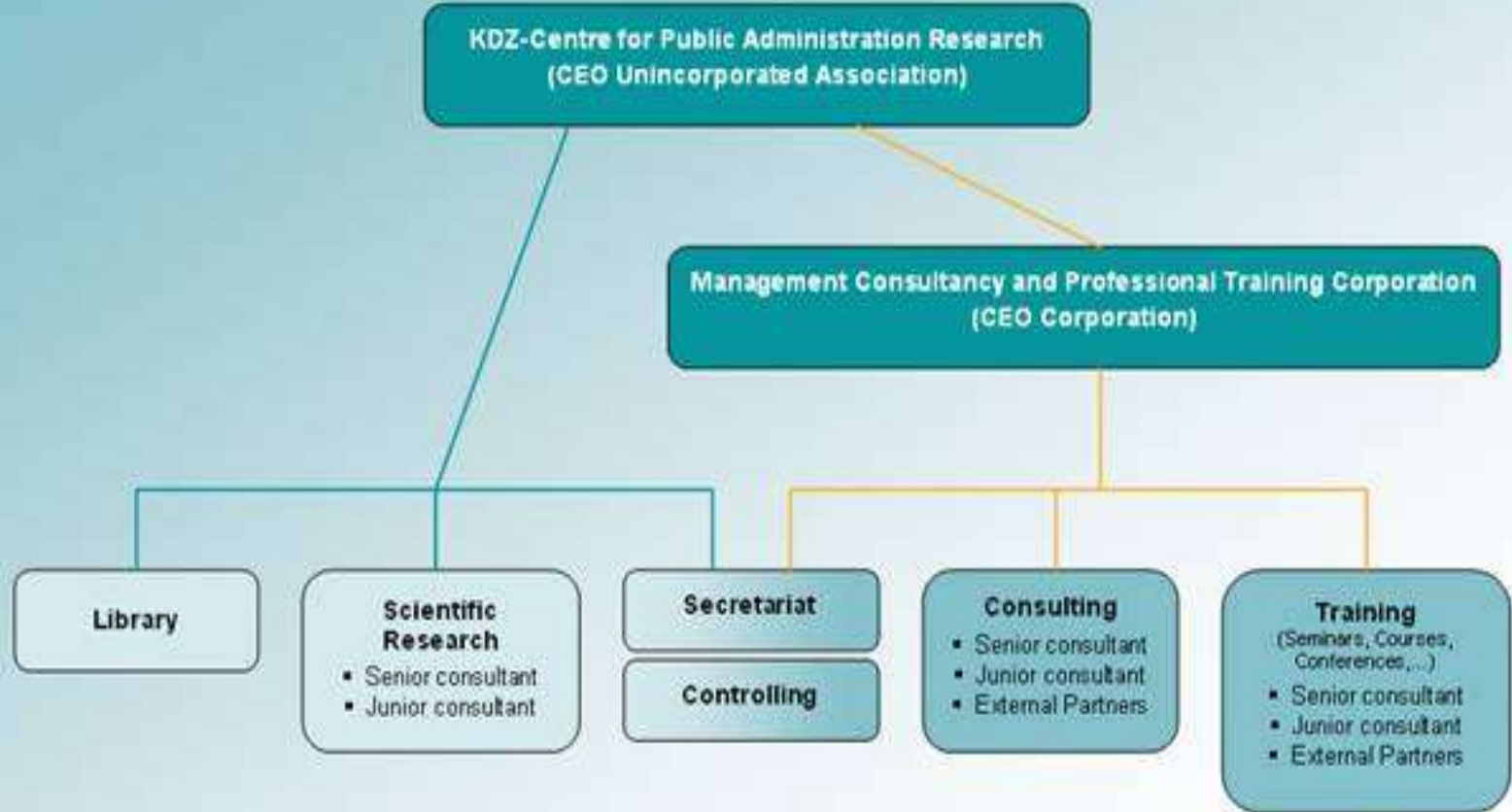
Strucutres and financial background of KDZ

Thomas Prorok

- **1969 KDZ-Centre for Public Administration Research**
- **unincorporated association based on the rules of a non profit organisation.**
- **association covers research and information within the range of public administrations.**
- **exchange of experience as well as the scientific and practical further training of politics, public officials**
- **In 1999 KDZ founded the subsidiary - the "KDZ-Management Consultancy and Professional Training Corporation" which is a limited liability company.**
- **KDZ has around 140 members and about 10 supporting organisations.**

- **KDZ Centre for Public Administration is an association**
 - possessing the corporation "KDZ-Management Consultancy and Professional Training Corporation"
- **General Assembly**
 - representatives of the members and is led by the President of KDZ.
 - gathered at least once a year and decides on the statutes.
- **Managing Board**
 - elected by the General Assembly
 - consists of 4 to 8 members elected on a 2-year term.
 - sets into force the CEO of the KDZ and determines the strategic guidelines of the Association.
- **Scientific Board**
 - advises the work of the Centre.
- **Chief Executive Officer (CEO)**
 - The CEO manages the Centre, leads the staff and the daily work and is responsible to the Managing Board.
- **Based on the Austrian Limited Corporation Law an own General Assembly acts as decision making body of the daughter company "KDZ-Management Consultancy and Professional Training Corporation".**

KDZ Organisational chart



- **Centre for Public Administration Research**
 - CEO
 - 1 senior research associate
 - 2,5 research assistants
 - 1,5 librarian
 - 0,5 statistic expert
- **Management Consultancy & Professional Training Corporation**
 - head of corp.
 - 2 senior consultants
 - 2 junior consultants
 - 1 training manager
- **1 controller**
- **3 office clerks / assistants**
- **from outside: various accounting services, IT support**
- **About 30 consultants & partners for training & project work being outside the institute: 5-8 in**

- **City of Vienna**
- **Almost all cities from 10.000 to 250.000 inh. (67 out of 73)**
- **majority of the cities from 5.000 to 9. 999 inh. (54 out of 73)**
- **Austrian Association of cities and towns**
- **Provinces of Burgenland, Lower Austria, (partly) Upper Austria**
- **Federal level (Chancellery; Ministry of Finance)**
- **4 big financial institutions**
- **Chamber of Labour**

cities

■ small flat rate – taking into account

- size of population
 - < 5.000 inh. 90 € p.a.
 - < 10.000 inh. 175 € p.a.
 - < 30.000 inh. 435 € p.a.
 - < 100.000 inh. 870 € p.a.
 - 100.000 inh. 1.750 € p.a.
- 2/100.000 of total tax receipts

provinces

- flat rate, taking into account the size of population